

DBI 01

Opravené potrubí $\phi 400$

47.8

42,60
 $\phi 400$

Krátký sací
vrták - odbočka $\phi 300$

STOKA "B"
36,6

Krátký sací
vrták - 3 m $\phi 300$
tl. 10
48,4

Krátký sací
vrták 13 m $\phi 400$
tl. 10

Krátký sací
vrták 22 m $\phi 400$
tl. 10

(223,72)
(225,72)

$\phi 300$

230,35
(229,19)

STOKA "B"

DBI 01

STOKA "B"
DBI 02

S24

S25

S26

S27

S28

S29

S30

S31

S32

S33

S34

S35

S36

S37

S38

S39

S40

S41

S42

S43

S44

S45

S46

S47

S48

S49

S50

S51

S52

S53

S54

S55

S56

S57

S58

S59

S60

S61

S62

S63

S64

S65

S66

S67

S68

S69

S70

S71

S72

S73

S74

S75

S76

S77

S78

S79

S80

S81

S82

S83

S84

S85

S86

S87

S88

S89

S90

S91

S92

S93

S94

S95

S96

S97

S98

S99

S100

OBJ. 02

STOKA "B"

47.88-

-38.4-

STOKA "B"

S22

-27.0-

S21 -16.3

OBJ. 02

STOKA "B"

-56.5-

OBJ. 02

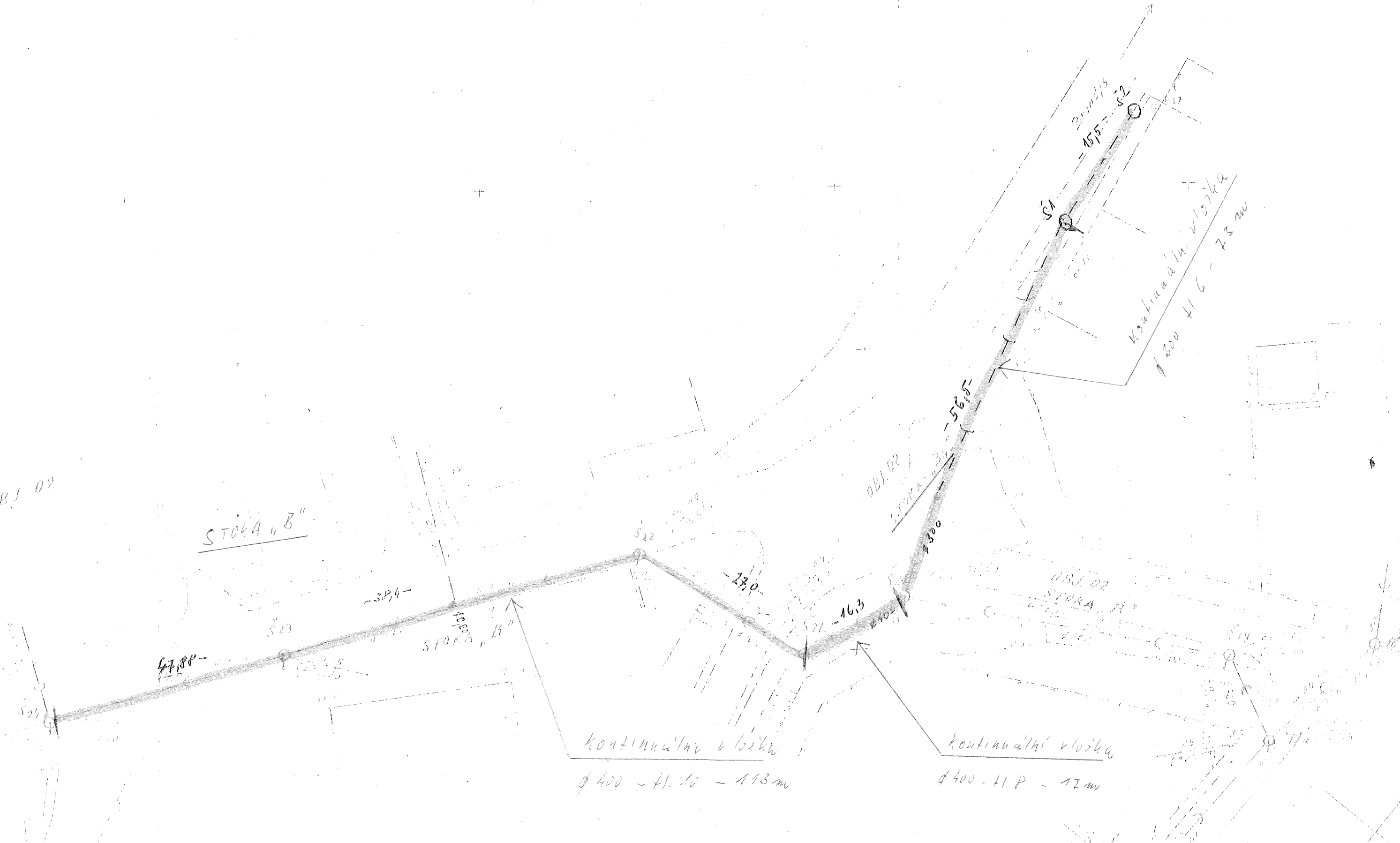
STOKA "B"

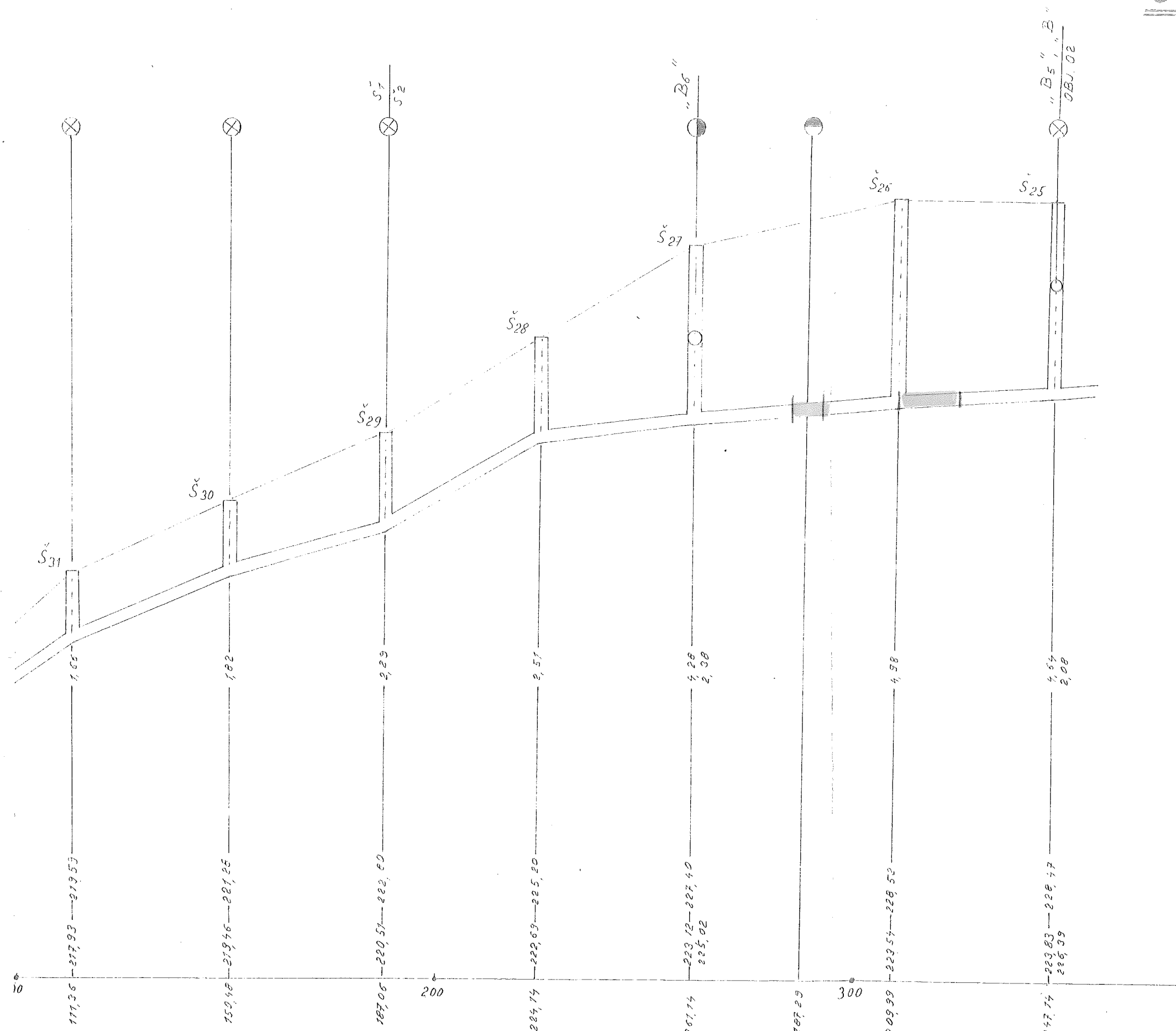
-15.5-

Kontinuační vložka
Ø 300 - 11.6 - 7.3 m

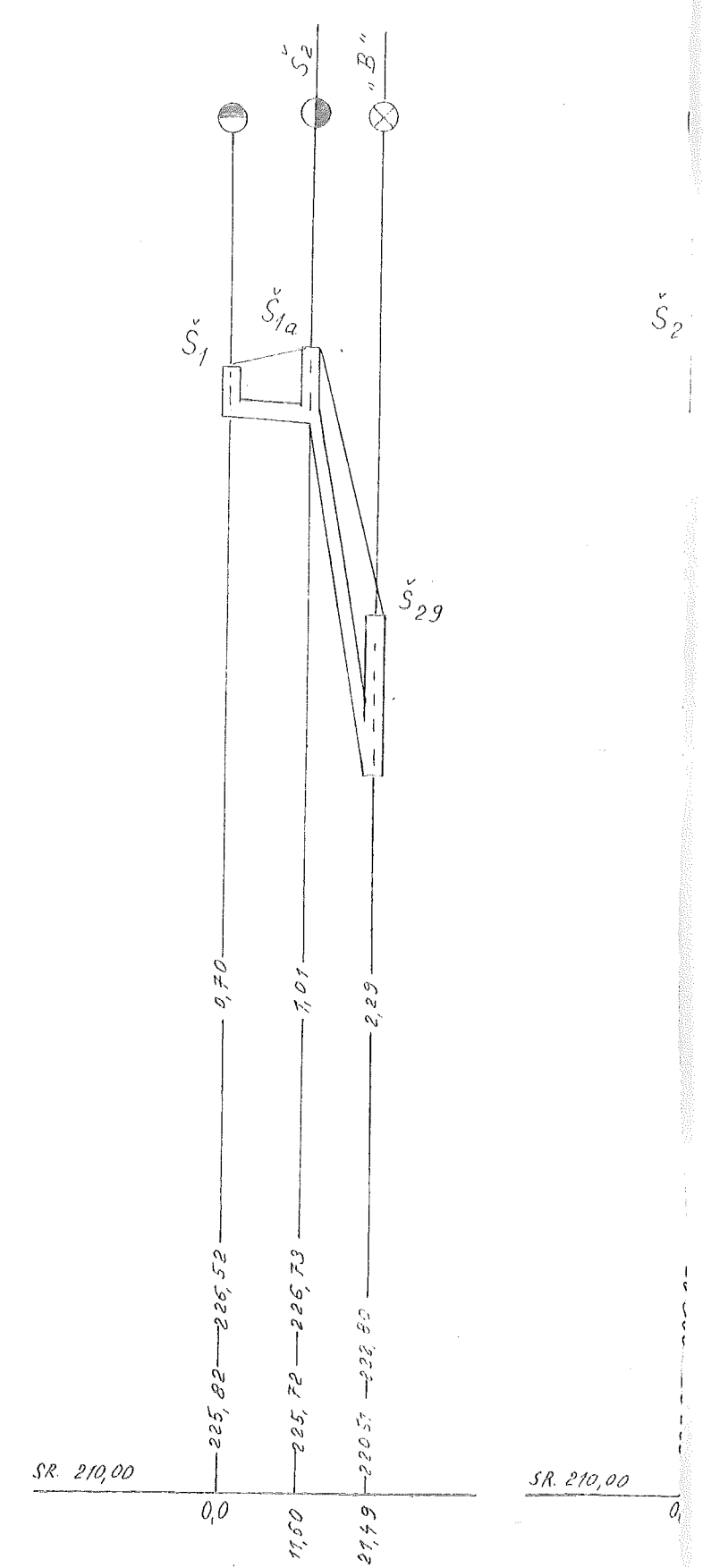
Kontinuační vložka
Ø 400 - 11.50 - 11.3 m

Kontinuační vložka
Ø 400 - 11 P - 12 m



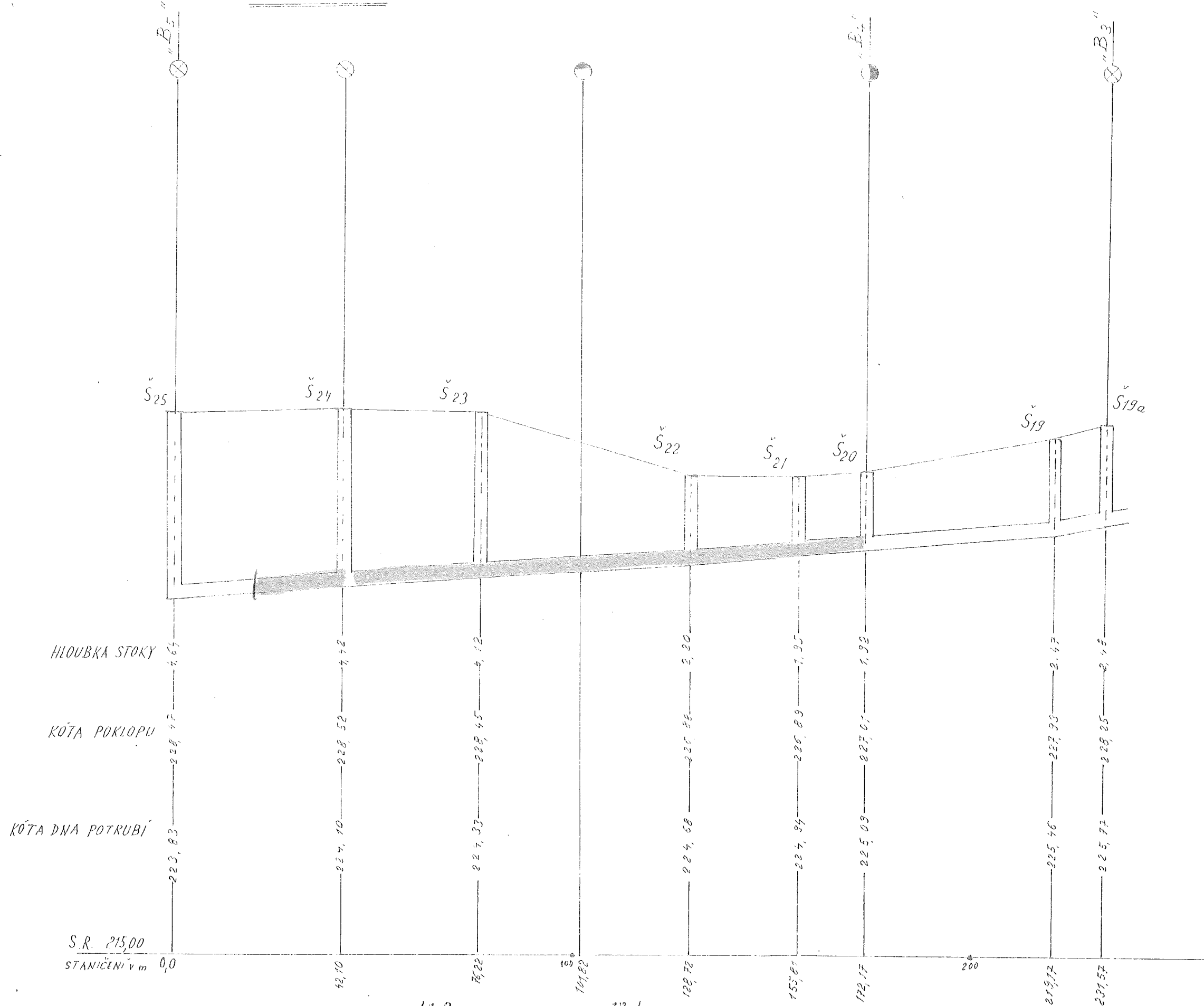


31,21m	39,1‰	39,12m	28,7‰	36,58m	58,8‰	37,08m	11,6‰	37,00m	8,6‰	48,85m	7,8‰	37,75m	
φ 300 mm									KAMENINA φ 300				φ 400 mm



8,6‰	528,8‰
11,60m	3,89m
φ 150 mm	

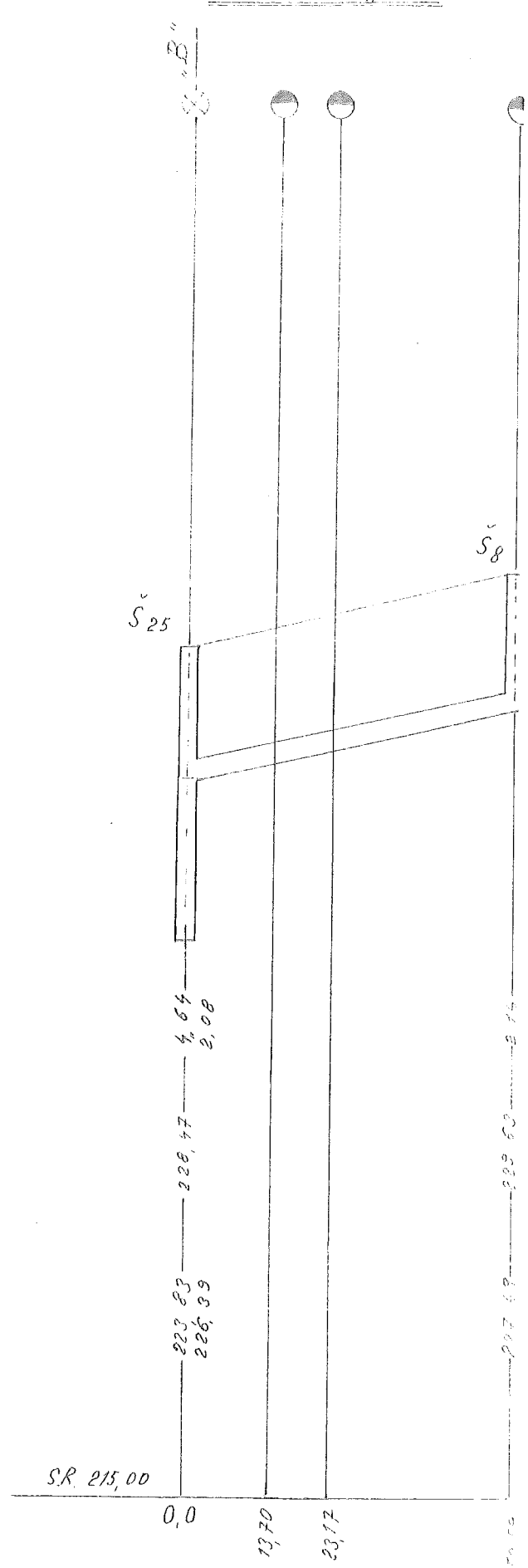
STUKA „B“



SKLON, DÉLKA
MATERIÁL, PROFIL

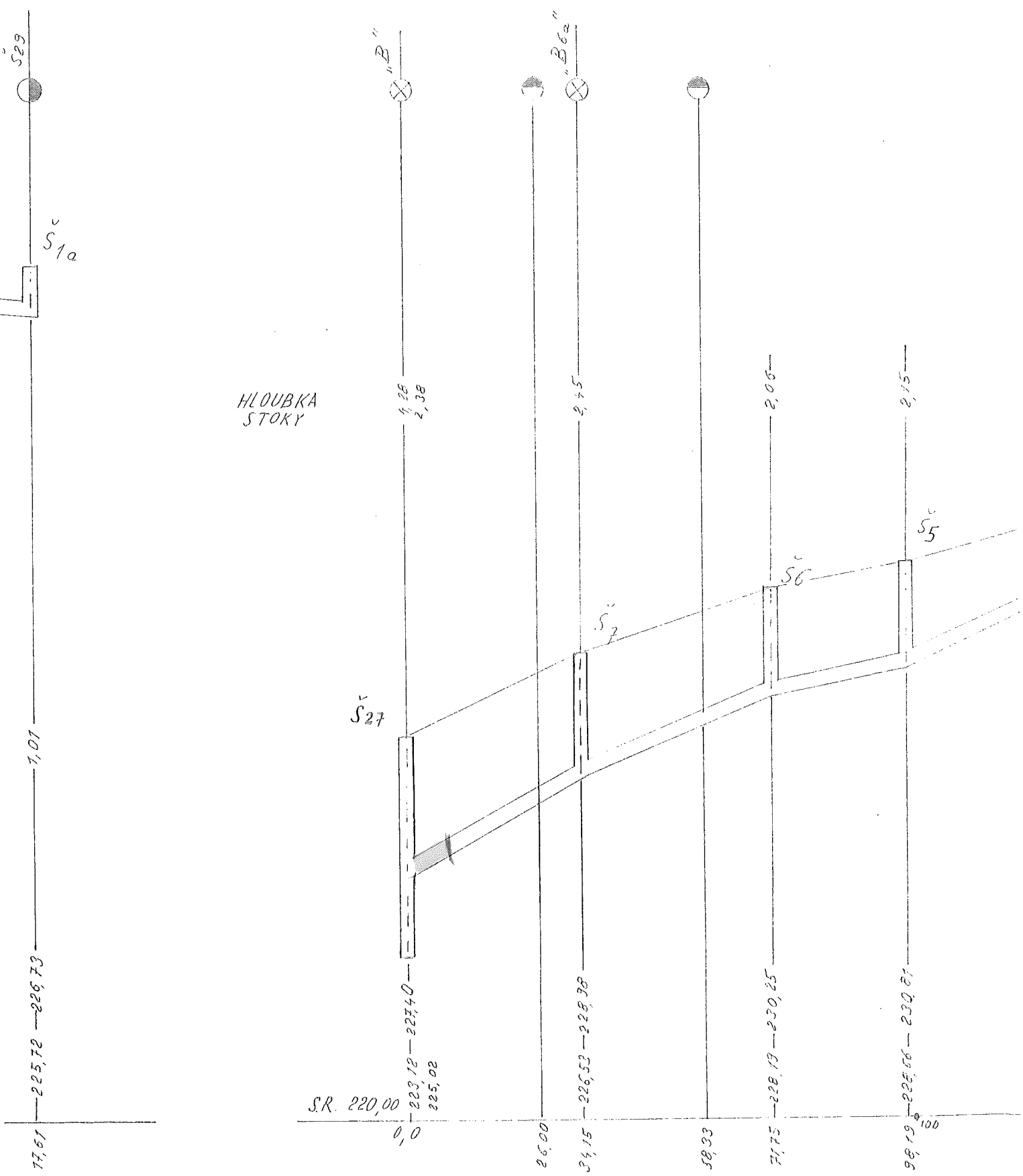
6,4‰	42,60 m	6,7‰	47,1 P	6,7‰	37,42 m	9,6‰	27,09 m	9,2‰	16,36 m	7,9‰	47,00 m	8,9‰	12,40 m
KAMENINA													
φ 400 mm													
												φ 300 mm	

STUKA „B₅“



20,9‰	52,59 m
KAMENINA	
φ 300 mm	

STOKA "B6"



HLOUBKA STOKY

44,2 ‰	34,15m	44,7 ‰	37,60m	17,8 ‰	26,44m	49,3 ‰
KAMENINA				φ 300 mm		